

Peter Muessig-Trapp

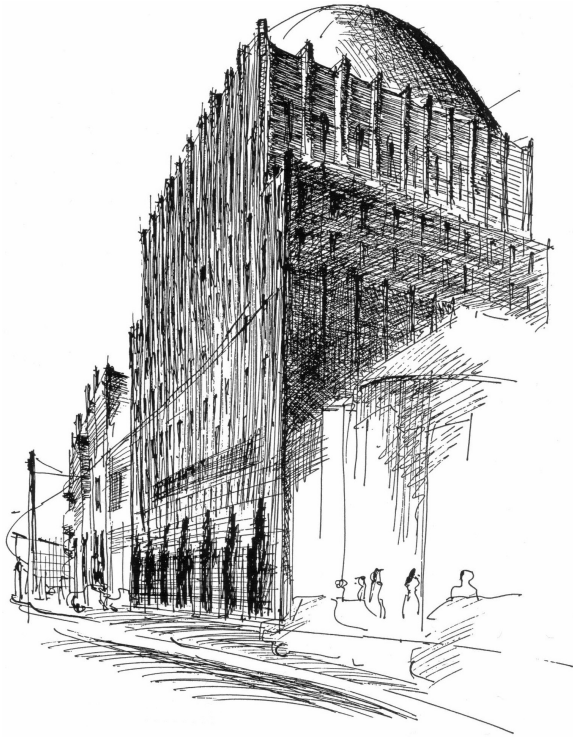
Integrated Campus-Management with HISinOne

Tempus iKnow workshop
Delegation from the Republic of Macedonia
TU Dortmund, 4 March 2011





Hochschul-Informationen-System GmbH
Higher Education Information System Agency



IT for Higher Education

Information technology for higher education (~ 162 Employees)

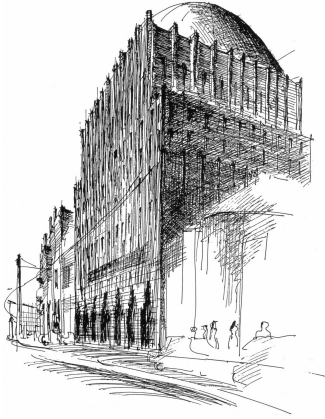
Research on Higher Education

Studying, teaching, research, funding (~ 82 Employees)

Higher Education Development

Buildings, resources, organisation (~ 47 Employees)

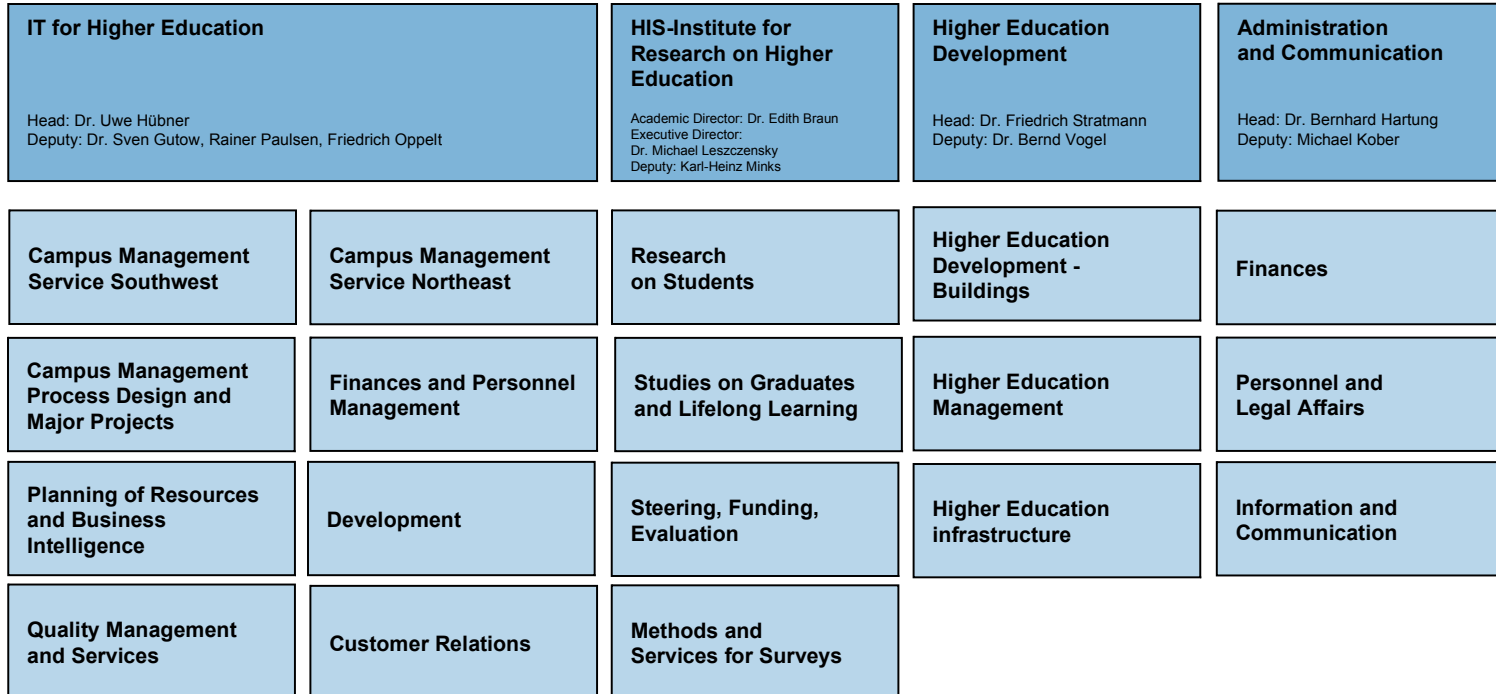
HIS: - General Information (2)



- HIS was founded as a non-profit organization in 1969 and is jointly owned by the Federal Republic and the *Länder* of Germany
- HIS is situated in Hannover, Germany
- HIS has around 329 employees
- HIS has an annual budget of 24 Million Euro


HIS Higher Education Information System GmbH

Managing Director: Prof. Dr. Martin Leitner
Deputy: Dr. Bernhard Hartung





Campus-Management up to now

A large red puzzle piece is centered on a white background of other puzzle pieces. The red piece is the only one filled with color, while the others are just black outlines. A semi-transparent white horizontal bar is overlaid across the middle of the red piece, containing the text.

Integrated Campus-Management



Why HISinOne?

- integrated Management of Campus and Ressources in one system – the only one at the market
- Integration of stakeholders, data and technology
 - one system for all
 - all data is stored *once* in a *central* database
 - one technology for *everything*
- High Level technical architecture – not a mixed system of web technologies and clients

Why a web-based system?

- future-proof
- flexibility
- handicapped accessible
- time and location independent access
- mobile devices



HISinOne is open and therefore future-proofed

- Platform independent
- open architecture
- open data model
- open source (community source)

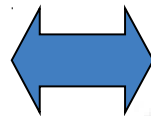
➤ **No technological
„dead end street“**



Integrated University Management

– for all!

- prospectives
- applicants
- students
- alumni
- lecturer
- clerks
- management
- extern



- management of ...
 - applications
 - students
 - examinations
 - Courses and programmes
 - alumni
 - facilities
 - research

Integrated University Management – for the administration



- functionalities for planing and reporting
- integrated business intelligence
- better service for all target groups (from applicants to alumnis)

Integrated University Management – for the students

- Courses
- Examination
- History of Study
- Communities
- Certificates
- „What's the next course to enroll?“
- „Where can I find an internship?“



➤ ... and much more – centrally organized, in a **personalized portal**

Integrated University Management – for lecturers



- **It makes live easier, really!**
- Communication with students
- Distribution of study materials
- Using e-learning systems
- Evaluation of own lectures

Integrated University Management – for clerks

- Manage resources / appointments / marks efficiently
- Easy production of transcript of records, certificates etc.
- Easy workflows
- Easy communication with all relevant stakeholders



HISinOne – new potentialities: Corporate Design

Sitemap

Sie sind hier: [Startseite](#) > [Online-Bewerbung](#) > [Online-Bewerbung](#)

- Selbstregistrierung
- E-Mail-Verifizierung
- **Online-Bewerbung**
- Navigation ausblenden

Online-Bewerbung

Willkommen!

Sehr geehrte Bewerberin, sehr geehrter Bewerber,

die Online-Bewerbung ist in zwei Schritte gegliedert; die Registrierung und der Bewerbungsvorgang.

1. Schritt – Die Registrierung

Sofern Sie noch keinen Account besitzen müssen Sie sich zunächst registrieren. Dazu geben Sie Ihre E-Mail-Adresse ein und wählen ein Passwort aus. Anschließend erhalten Sie per E-Mail einen Registrierungszugang. Bitte folgen Sie den Anweisungen in der E-Mail zur Aktivierung des Zugangs.

2. Schritt – Bewerbungsvorgang

Wenn Ihre E-Mail-Adresse verifiziert wurde und Sie somit registriert sind, können Sie sich mit Ihrem Benutzernamen und Ihrem Passwort einloggen. An dieser Stelle geben Sie Ihre Bewerbungsdaten ein. Änderungen bzw. Korrekturen können bis zum Bewerbungsschluss vorgenommen werden.



Registrieren

Hier registrieren Sie sich und wählen Ihre Zugangsdaten aus, die Sie bitte unbedingt notieren.



Bewerben

Hier können Sie Ihre Bewerbungsdaten eingeben bzw. ändern, wenn Sie bereits registriert sind.

Informationen

Registrierung:

Sollten Sie bereits eine Kennung besitzen, melden Sie sich als 'Bereits Registriert' an.

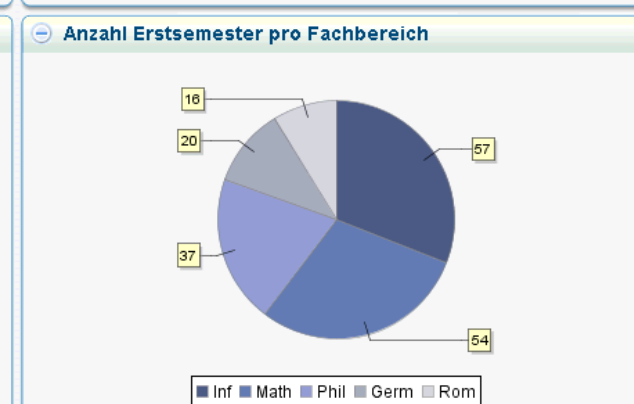
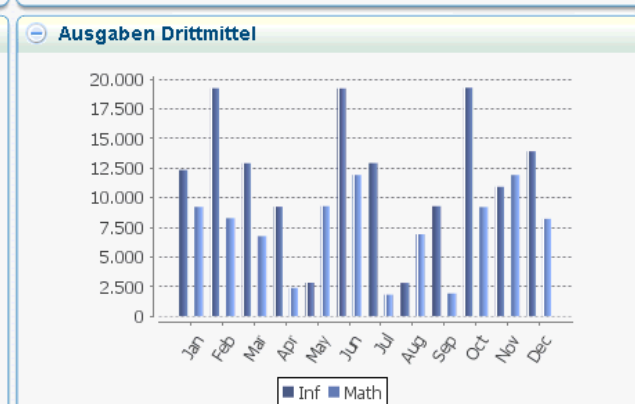
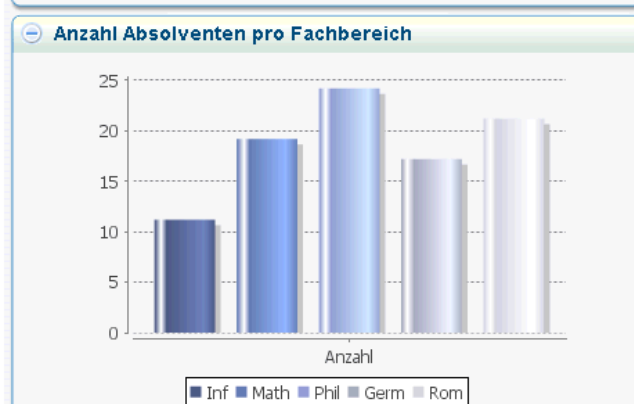
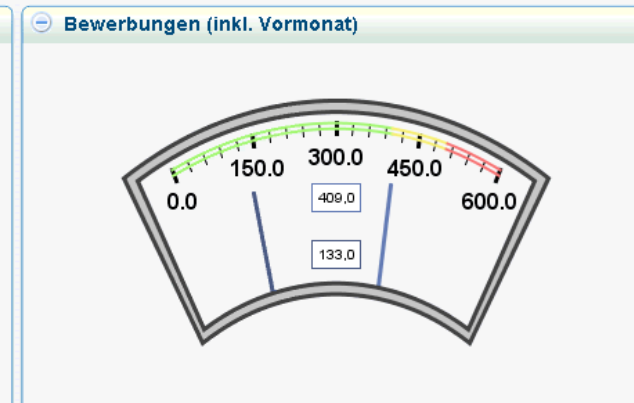
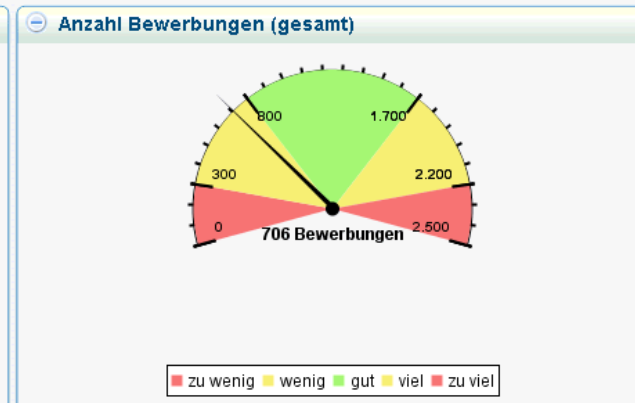
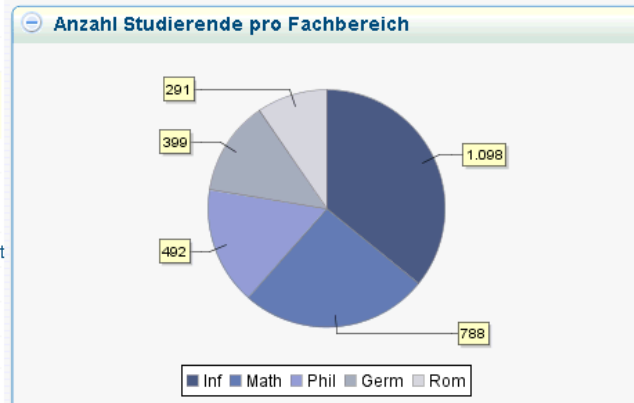


HISinOne
– new potentialities:
modern access pathes,
e. g. mobil devices
like Iphone, Android

new potentialities: Management Cockpit

Management Cockpit

Show: Meta-Infos [Refresh](#)



HISinOne – new Functionalities

- Business Intelligence (eduStore)
- Alumni-Management
- E-Learning-Integration (OSS-Addon Moodle)
- Projektmanagement (OSS-Addon Achievo)
- Evaluation (OSS-Addon LimeSurvey)
- Document Management (OSS-Addon Alfresco)
- Process management/Workflow (Aristaflow)
- Identity-Management (e. g. PSV, LDAP)
- **HISinOne Portal**



HISinOne Portal

The portal of the University of Göttingen:

<https://ecampus.uni-goettingen.de/>

The portals' FAQ-movie:

<http://doc.megatron.stud.uni-goettingen.de/ecampus/faq>

Presentation at the HIS user congress, Juni 2010:

Part 1 (HIS):

http://wiki.his.de/mediawiki/img_auth_wikirights.php/e/ed/HISinOne

Part 2 (Uni Göttingen):

http://wiki.his.de/mediawiki/img_auth_wikirights.php/8/88/HISinOne

The customer - supplier model: Rollout of HISinOne - One Time Charges

On behalf of HIS:

- ?? person-days for the rollout
PD = 698 € netto in Germany
PD = 942 € netto abroad
(international / privat: +35%,
because of the public funded
development)
- Additional costs can come into
being, e. g. for interfaces to
third party products

On behalf of the University

- min person days HIS * 2,5
- Charges for new hard- and software
(server, databases usw.)
- Payroll costs for the rollout
 - min. 1 person project management
 - Person-days according to the pre-
defined working plan packages
- Payroll costs operation:
 - 1-2 person

The customer - supplier model: Support - recurrent Charges

Depends on ...

- the support level (Basic, High Level, Premium),
- the number of students at the university and
- the used functional range (core segment including BI, Campus Management, Resource Management, Research Management)

typically:

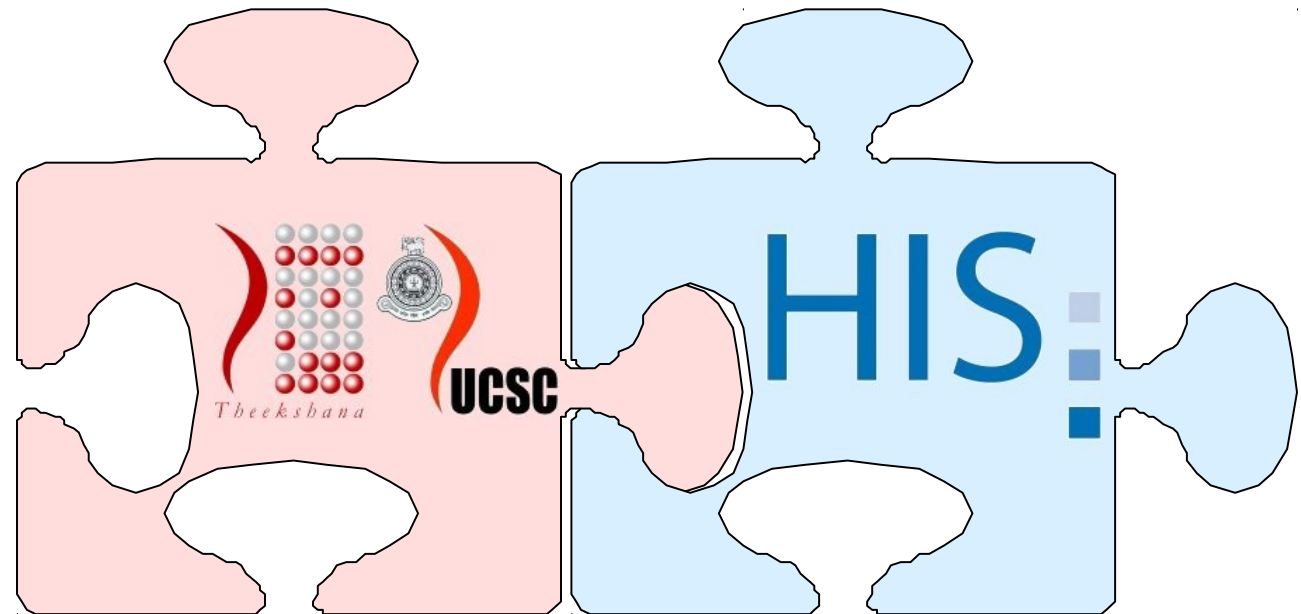
- 4.000 Euro (basic, core and BI, 1000 students)
- 50.000 Euro (High Level, everything, > 45.000 students)

international: + 35%

The partnership model:

E. g. international cooperation with Sri Lanka

- HIS Hanover and UCSC Colombo have established a long-lasting collaboration ...
- ... for implementing N-HEMIS
- ... for joint further development of eduSTORE



Offering collaboration and partnership



What we hadn't done:

- HIS did **not** deliver a badly adapted foreign software solution
- HIS did **not** come, install, go, forget about it
- HIS did **not** provide hidden dependencies

NO!



Free Software

Offering the freedom of free software

ICE is free software!

- Open Source: **Source code is available free of charge**
- Everybody is allowed to use the software
- Everybody is allowed to **change the source**
- Everybody could **adapt the software** to one's specific needs
- Open Source software provides you with the **freedom of independency**
- **No new dependencies** on foreign countries or on any company



N-HE

Using a
in Higher Edu

Dr. Damitha Karunaratna, UCSC Colombo
Peter Muessig-Trapp, HIS Hanover

Colombo, 16 July 2008

Cooperations on international and national level

- Establishing long lasting collaborations
- Setting up permanent development groups outside of HIS (e.g. in Sri Lanka)
- Establishing permanent exchange of knowledge and persons
- International cooperation: extending the development collaboration to other countries
- The goal: to create development partnerships (and not to primarily sell goods and services)

Further Information

- www.his.de
- www.hisinone.de
- www.edustore-project.org



Contact



Peter Muessig-Trapp

HIS GmbH Hannover, Germany

International Account Manager

muessig@his.de

+49 511 1220 193

www.his.de